

Midwest Big Data Hub

Accelerating the Big Data Innovation Ecosystem



Ed Seidel
PI (Illinois)



Beth Plale
Co-PI (Indiana)

IOWA STATE
UNIVERSITY

Sarah Nusser
Co-PI (Iowa State)



Brian Athey
Co-PI (Michigan)



Grant McGimpsey
Co-PI, (UND)



Funded by the National Science Foundation (award #1550320)



Our mission:

Develop effective cross-sector, data-enabled networks to solve shared problems of regional and societal interest.

Cultivate communities

- Convene meetings; accelerate partnership development; catalyze new research; increase access to data tools & services
- Shared use cases and data sets to train cross-functional teams

Reduce friction in Data-to-Decision systems

- Sharing and access arrangements (policy; use agreement templates)
- Pilot and Demonstration projects

Help drive regional economic development & inclusion

- Data literate society
- Workforce development, training and education
- Leverage economies of scale (infrastructure)

MBDH projects & partnerships

➤ *Open Commons Consortium*

- *Demonstration project with the ROGER cyberGIS resource on opening ~200TB of NOAA environmental data*

➤ *tranSMART Foundation*

- *Enable the development of precision medicine – by opening biomedical data*

➤ *National Data Service*

- *MBDH community access to hardware/software test-bed environments*
- *Inclusion in the NDS Labs Workbench catalogue*

➤ *HealthDataMatters.org*

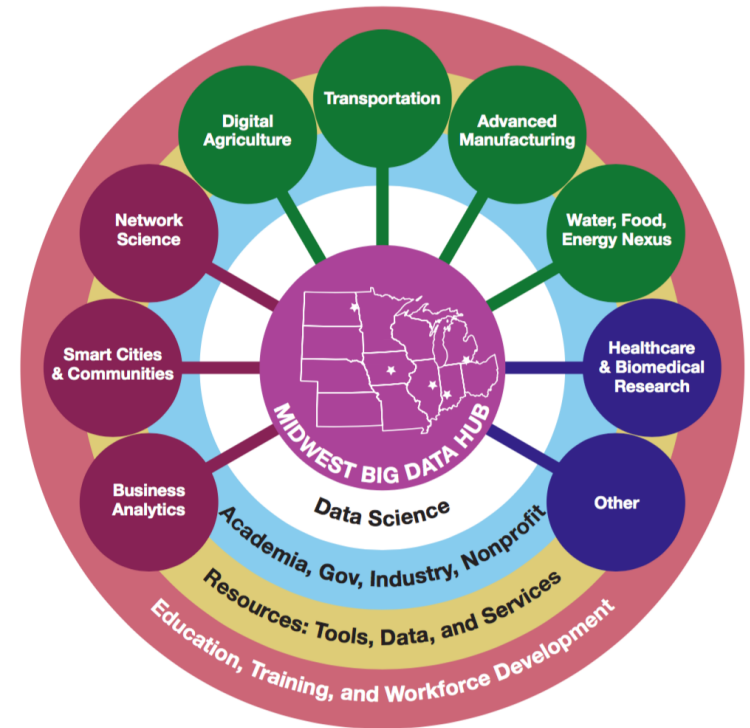
- *Health data resource for government, academic, non-profit, community and industry partners in Cleveland & Cuyahoga County, Ohio.*

➤ *Regional Big Data Innovation Hubs*

- *NTIS Joint Venture Partnership: rapid deployment of expert data teams*

Thematic Communities in the Midwest Hub

- Digital Agriculture
- Food, Energy, & Water
- Metro/Urban Sciences
- Transportation
- Network Sciences
- Advanced Manufacturing
- Business Analytics
- Health & Biomed Research
 - *Materials Sciences*
 - *Unmanned Systems, robotics, and sensors*





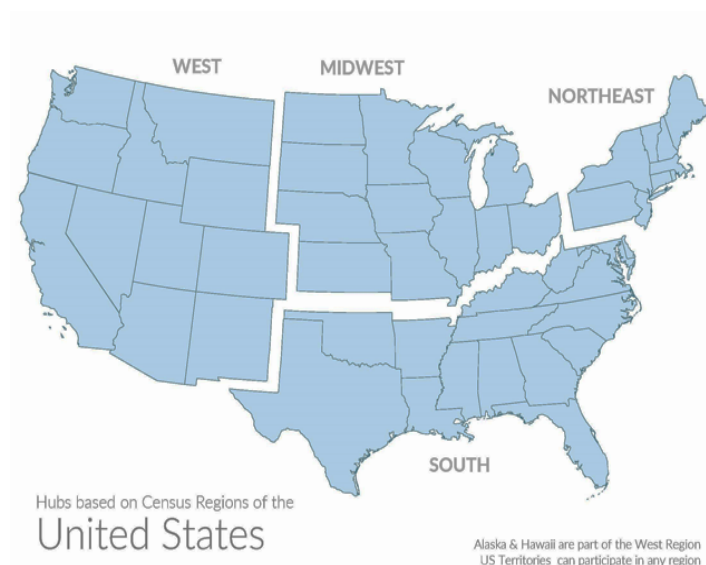
Regional Data Innovation Hubs

History

2012: White House “Big Data Research and Development Initiative” → \$200 million

2015: NSF → \$6 million to four Hubs and set to award another \$10 million to the Spokes, this year.

#BDHubs



Thank you



midwestbigdatahub.org